

# Kidde Fire Systems HPCO<sub>2</sub>

## Component Description

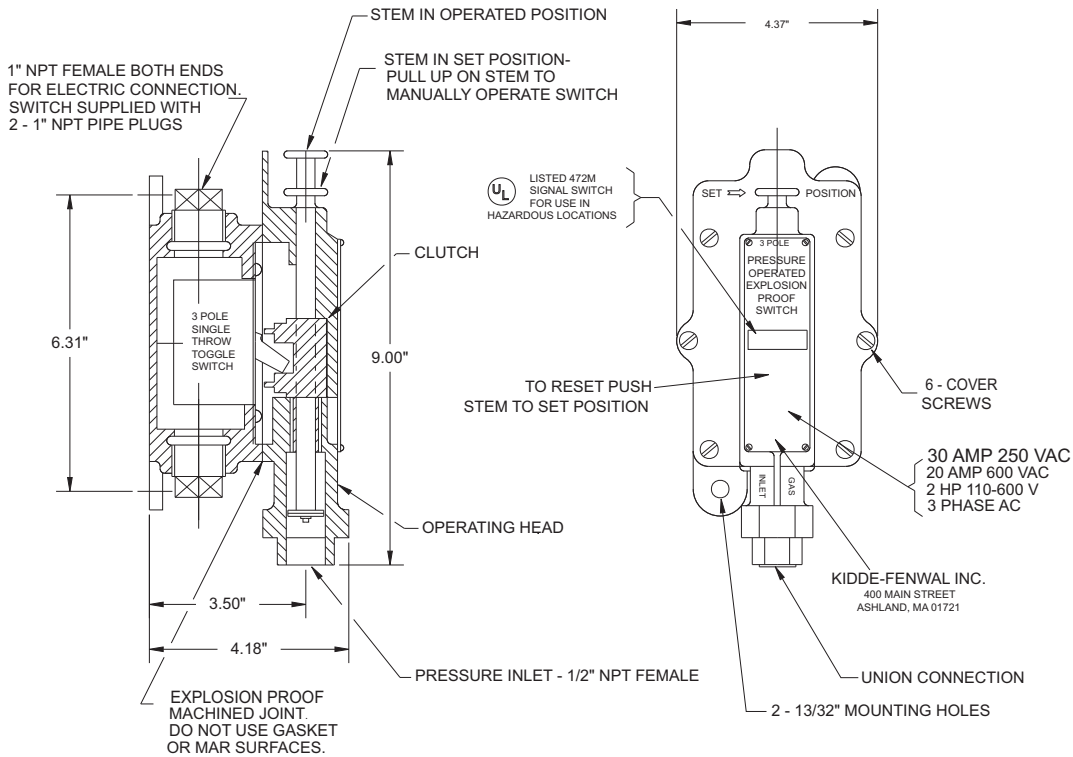
Pressure Operated Switch, Explosion Proof  
P/N: 81-981332-000



Effective: February 2019  
K-81-5190 Rev AC

### FEATURES

- UL 1203 Listed to:  
Class I, Groups C and D  
Class II, Groups E, F, and G



### MATERIALS

BASE: MALLEABLE IRON

OPERATING HEAD: CAST BRONZE



To prevent ignition of hazardous atmospheres, disconnect the device from the supply circuit before opening. Keep the assembly tightly closed when in operation.



Do not scratch or mar the surface of the explosion proof machined joint. Doing so may create a flame path and lead to an explosion.

---

## NOTES

- The toggle switch may be mounted in the base for either N.O. to N.C. or N.C. to N.O. contact transfer upon operation. The illustration above shows the position of the toggle when the switch is in the set position.
- Any load connected to the switch must not exceed the switch rating and shall use a suitable protection device (i.e., circuit breaker, fuse).
- Remove the operating head to make electrical connections to the toggle switch. When replacing the operating head, ensure that the toggle engages the clutch. Tighten the cover screws securely.
- For use on Kidde Fire Systems Industrial and Marine High Pressure CO2 systems.
- The explosion-proof pressure switch is not waterproof or rated for outdoor applications and must be mounted either indoors or in an enclosure that is protected from water.

### **EXPORT INFORMATION (USA)**

Jurisdiction: EAR

Classification: EAR99

This document contains technical data subject to the EAR.

All trademarks are the property of their respective owners.

This literature is provided for informational purposes only. KIDDE-FENWAL, INC. believes this data to be accurate, but it is published and presented without any guarantee or warranty whatsoever. KIDDE-FENWAL, INC. assumes no responsibility for the product's suitability for a particular application. The fire suppression system design, installation, maintenance, service and troubleshooting must be performed by trained, authorized Kidde Fire Systems distributors for the product to work correctly. If you need more information on this product, or if you have a particular problem or question, contact: KIDDE-FENWAL, INC., Ashland, MA 01721 USA, Telephone: (508) 881-2000.